

SLC5A4 Antibody (C-term)
Purified Rabbit Polyclonal Antibody (Pab)
Catalog # AP21548b**Specification**

SLC5A4 Antibody (C-term) - Product Information

Application	WB,E
Primary Accession	O9NY91
Reactivity	Human
Host	Rabbit
Clonality	polyclonal
Isotype	Rabbit IgG

SLC5A4 Antibody (C-term) - Additional Information**Gene ID** 6527**Other Names**

Low affinity sodium-glucose cotransporter, Sodium/glucose cotransporter 3, Na(+)/glucose cotransporter 3, Solute carrier family 5 member 4, SLC5A4, SAAT1, SGLT2

Target/Specificity

This SLC5A4 antibody is generated from a rabbit immunized with a KLH conjugated synthetic peptide between 621-655 amino acids from the C-terminal region of human SLC5A4.

Dilution

WB~~1:2000

E~~Use at an assay dependent concentration.

Format

Purified polyclonal antibody supplied in PBS with 0.09% (W/V) sodium azide. This antibody is purified through a protein A column, followed by peptide affinity purification.

Storage

Maintain refrigerated at 2-8°C for up to 2 weeks. For long term storage store at -20°C in small aliquots to prevent freeze-thaw cycles.

Precautions

SLC5A4 Antibody (C-term) is for research use only and not for use in diagnostic or therapeutic procedures.

SLC5A4 Antibody (C-term) - Protein Information**Name** SLC5A4 {ECO:0000303|PubMed:13130073}

Function Does not function as sodium/D-glucose symporter (PubMed:[13130073](#), PubMed:[20421923](#), PubMed:[22766068](#)). However, may function as a D-glucose sensor by generating a D-glucose-induced depolarization which is pH-independent, Na(+)-dependent at

neutral pH and probably H(+)-dependent at acidic pH (PubMed:[13130073](#), PubMed:[17110502](#), PubMed:[20421923](#), PubMed:[22766068](#)).

Cellular Location

Cell membrane; Multi-pass membrane protein

Tissue Location

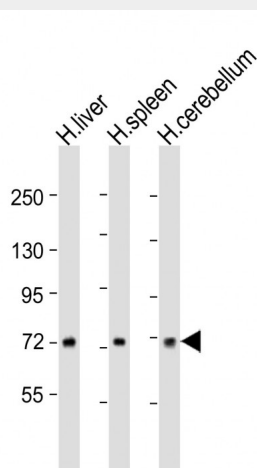
Expressed in skeletal muscle, where it may localize to the neuromuscular junction (at protein level) (PubMed:13130073) Expressed in small intestine where it may localize to cholinergic neurons of the submucosal plexus and myenteric plexus (at protein level) (PubMed:13130073). Detected in kidney (at protein level) (PubMed:22766068).

SLC5A4 Antibody (C-term) - Protocols

Provided below are standard protocols that you may find useful for product applications.

- [Western Blot](#)
- [Blocking Peptides](#)
- [Dot Blot](#)
- [Immunohistochemistry](#)
- [Immunofluorescence](#)
- [Immunoprecipitation](#)
- [Flow Cytometry](#)
- [Cell Culture](#)

SLC5A4 Antibody (C-term) - Images



All lanes : Anti-SLC5A4 Antibody (C-term) at 1:2000 dilution Lane 1: human liver lysates Lane 2: human spleen lysates Lane 3: human cerebellum lysates Lysates/proteins at 20 µg per lane. Secondary Goat Anti-Rabbit IgG (H+L), Peroxidase conjugated at 1/10000 dilution Predicted band size: 72 kDa Blocking/Dilution buffer: 5% NFD/MTBST.

SLC5A4 Antibody (C-term) - Background

Sodium-dependent glucose transporter.

SLC5A4 Antibody (C-term) - References

Gorboulev V.,et al.Submitted (FEB-2000) to the EMBL/GenBank/DDBJ databases.
Dunham I.,et al.Nature 402:489-495(1999).
Poppe R.,et al.Submitted (DEC-1995) to the EMBL/GenBank/DDBJ databases.